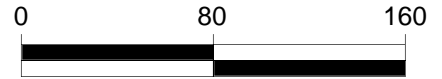
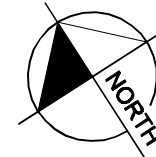


Drawing name: H:\048659.010\CADD\CYPRESS CREEK\_PARCEL\_18\parcel 18A.DWG Layout1 Aug 31, 2006 2:56pm by: david.phorn  
 This document, together with the concepts and designs presented herein, is intended only for the specific purpose and client for which it was prepared. Reuse of and improper reliance on this document without written authorization and adaptation by Kimley-Horn and Associates, Inc. shall be without liability to Kimley-Horn and Associates, Inc.

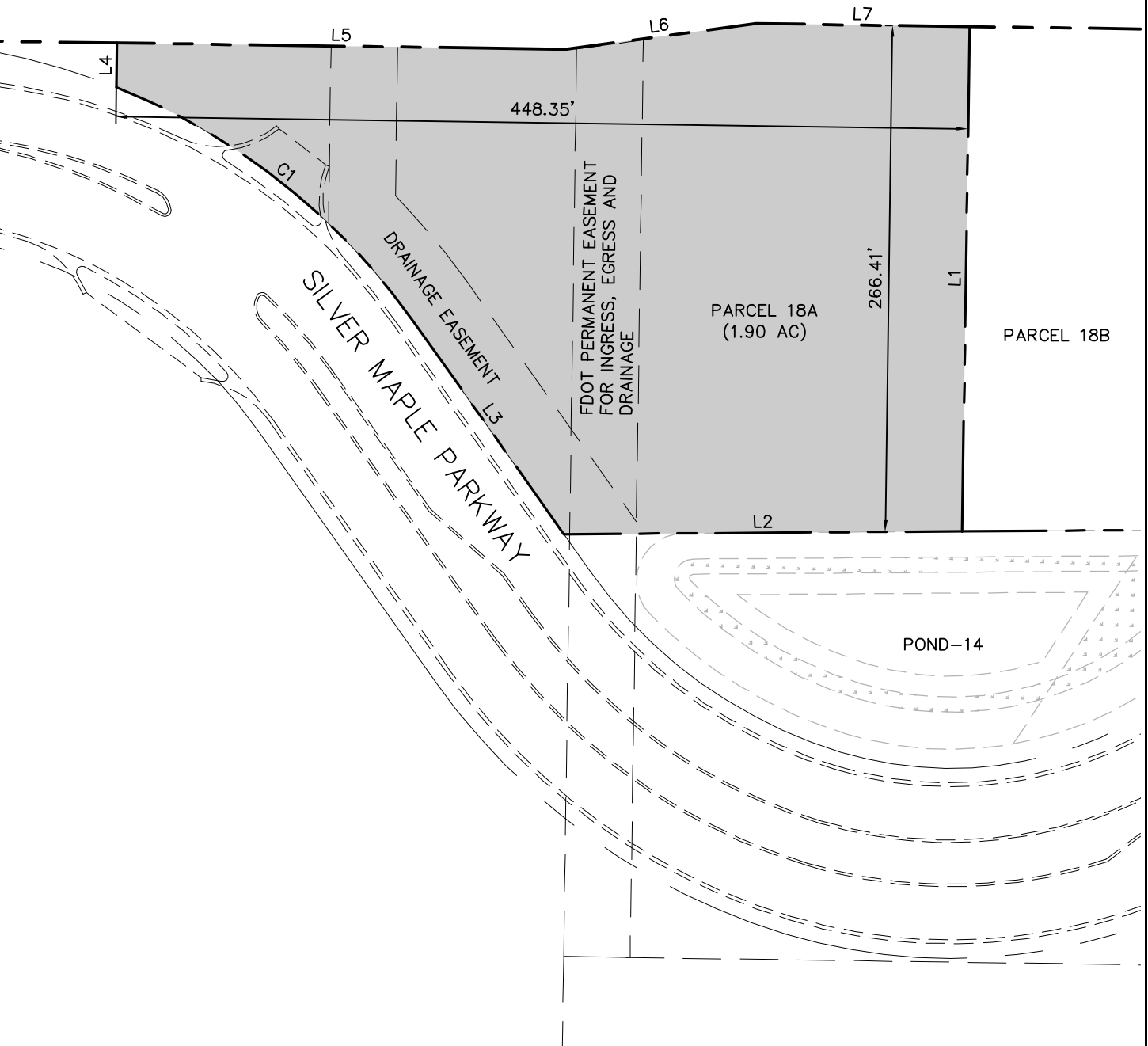
LINE TABLE		
LINE	LENGTH	BEARING
L1	265.62	S43°49'20"W
L2	209.61	N47°24'36"W
L3	137.10	N07°45'25"E
L4	23.33	N43°49'04"E
L5	235.99	S46°10'56"E
L6	101.12	S54°42'46"E
L7	112.37	S46°11'17"E



SCALE AS SHOWN

CURVE TABLE						
CURVE	LENGTH	RADIUS	TANGENT	CHORD	CHORD BEARING	DELTA
C1	201.81	350.00	103.80	199.03	N08°45'42"W	33°02'13"

## STATE ROAD 56



SCALE AS NOTED  
 DESIGNED BY DDP  
 DRAWN BY DDP  
 CHECKED BY ALR

**Kimley-Horn and Associates, Inc.**  
 © 2005 KIMLEY-HORN AND ASSOCIATES, INC.  
 10117 Princess Palm Avenue, Suite 300, Tampa, FL 33610  
 PHONE (813) 620-1460 FAX (813) 620-1542  
 WWW.KIMLEY-HORN.COM CA 00000696

DATE  
 AUG., 2006  
 PROJECT NO.

### CYPRESS CREEK PARCEL 18A

DESIGN ENGINEER:  
 FLORIDA P.E. LICENSE NUMBER:

SHEET NUMBER  
**1**