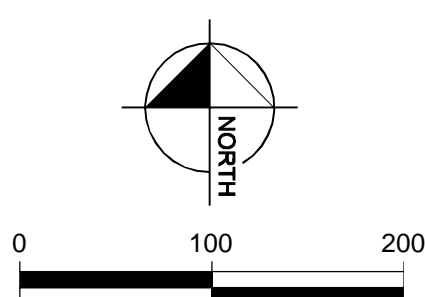
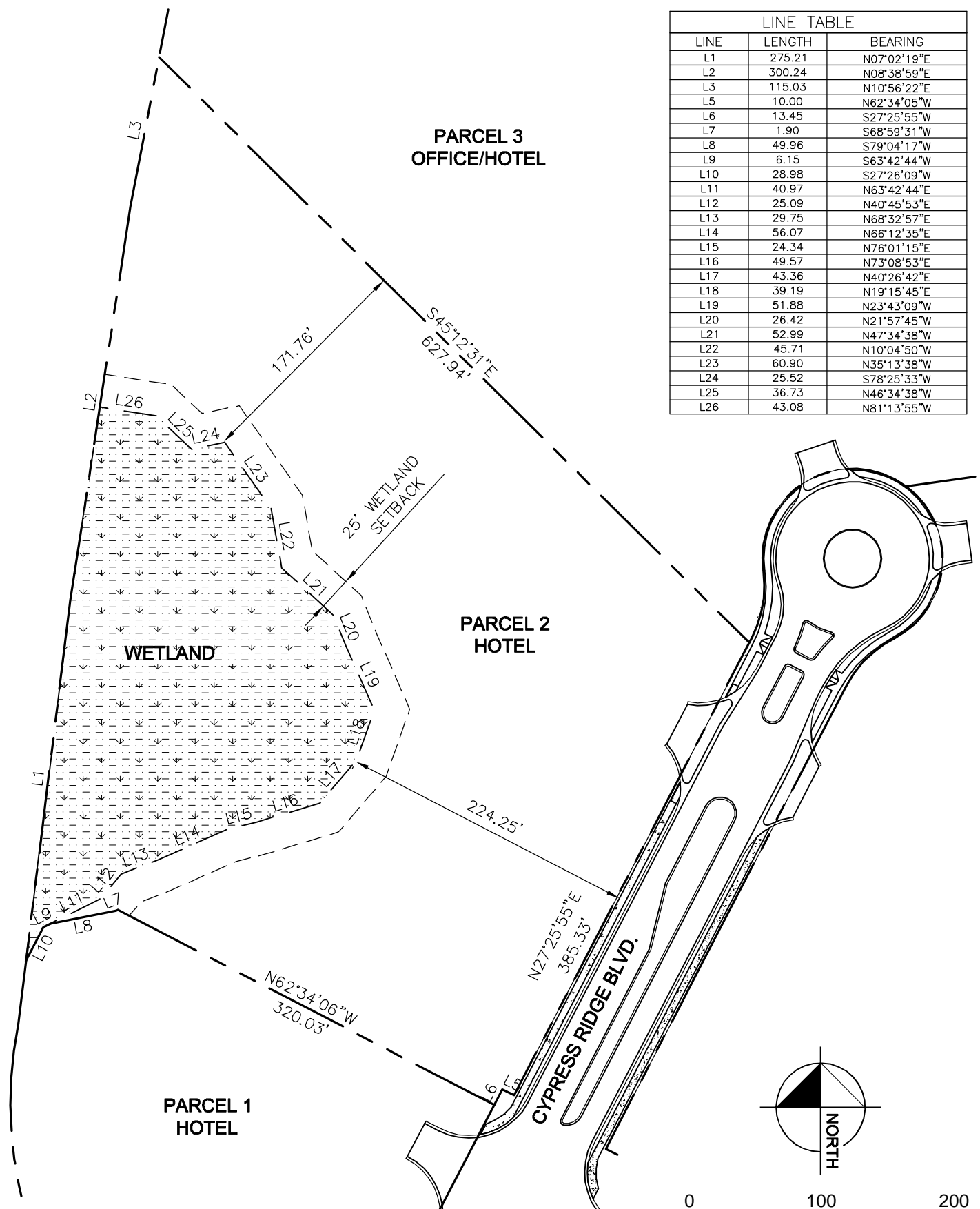


Drawing name: H:\048659.010\CADD\CYPRESS CREEK_PARCEL CONCEPTS\Parcel 02\Parcel_2.dwg Layout1 Aug 01, 2006 4:39pm by: david.pham

This document, together with the concepts and designs presented herein, is intended only for the specific purpose and client for which it was prepared. Reuse of and improper reliance on this document without written authorization and adaptation by Kimley-Horn and Associates, Inc. shall be without liability to Kimley-Horn and Associates, Inc.

LINE TABLE		
LINE	LENGTH	BEARING
L1	275.21	N07°02'19"E
L2	300.24	N08°38'59"E
L3	115.03	N10°56'22"E
L5	10.00	N62°34'05"W
L6	13.45	S27°25'55"W
L7	1.90	S68°59'31"W
L8	49.96	S79°04'17"W
L9	6.15	S63°42'44"W
L10	28.98	S27°26'09"W
L11	40.97	N63°42'44"E
L12	25.09	N40°45'53"E
L13	29.75	N68°32'57"E
L14	56.07	N66°12'35"E
L15	24.34	N76°01'15"E
L16	49.57	N73°08'53"E
L17	43.36	N40°26'42"E
L18	39.19	N19°15'45"E
L19	51.88	N23°43'09"W
L20	26.42	N21°57'45"W
L21	52.99	N47°34'38"W
L22	45.71	N10°04'50"W
L23	60.90	N35°13'38"W
L24	25.52	S78°25'33"W
L25	36.73	N46°34'38"W
L26	43.08	N81°13'55"W



SCALE AS NOTED
DESIGNED BY
DRAWN BY
CHECKED BY ALR

Kimley-Horn and Associates, Inc.
 © 2005 KIMLEY-HORN AND ASSOCIATES, INC.
 10117 PRINCESS PALM AVE., SUITE 300, TAMPA, FL 33610
 PHONE (813) 620-1460 FAX (813) 620-1542
 CA 0000696

DATE
08/01/2006
PROJECT NO.

CYPRESS CREEK PARCELS 2

DESIGN ENGINEER:
FLORIDA REGISTRATION NUMBER:

SHEET NUMBER
1